

Breakthrough Odour Monitor



The Breakthrough Monitor has been designed to indicate failure of odour control plant operation. The system incorporates an electrochemical cell sensor and PLC to overcome electronic noise interference at low ppm levels. Lowest detectable level of 0.5 ppm (500 ppb); calibrated for Hydrogen Sulphide but is cross sensitive to Mercaptans. Full sampling and conditioning equipment supplied as standard to cater for a variety of site conditions including wet gas and/or zoned gas streams. Can be used to sequentially sample more than one sample point saving on additional capital purchase. No operator maintenance required as supplied with an auto drain catch pot and flow failure facility as standard.

FEATURES AVAILABLE

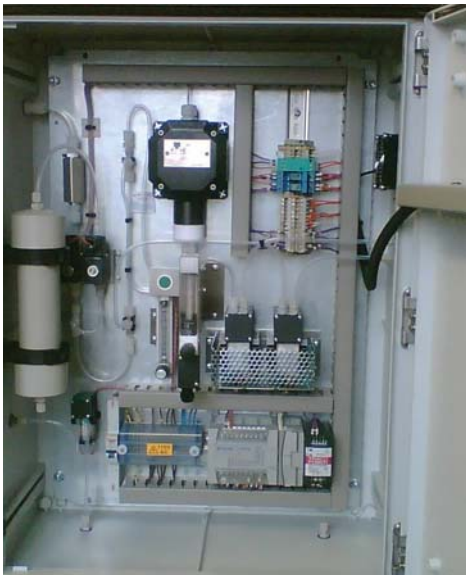
- Sampling and conditioning equipment
- Suitable for Zone 1 or Zone 2 classified gas streams
- Analogue 4–20 mA signals
- Volt free contact for flow failure facility
- Text messaging fault conditions (see Wireless Communications brochure)
- Security key lockable cabinet versions
- LED front panel for local indication of fault or alarm
- Frameworks for floor or wall mounting

FACILITIES AVAILABLE

- Design
- Manufacture
- Installation
- Delivery
- Commissioning
- Demonstration
- Training
- Servicing
- Hire



Breakthrough Odour Monitor



SYSTEM SPECIFICATIONS

- System can be configured to operate from either 110V or 240V mains supply.
- Standard cabinet is supplied IP66 rated in GRP.
- Range output from PLC to SCADA is 0 – 3 ppm. Onboard valves are controlled by the PLC to enable switching between the sample stream and fresh air. Local environment air is cleaned by a carbon filter and used to create a zero baseline before detection. During this phase the catch pot is automatically drained of any water collected within the sample stream. The system is then switched to sample mode and the auto drain closed. After a settling period, signal averaging is used to determine the H₂S level, reducing the impact of electronic noise interference.
- Proven sample line length up to 100 metres using specialist tubing.
- Flow failure facility as standard (VFC).
- Text messaging of alarm and fault conditions – subject to suitable network coverage.
- Supplied with hot dig galvanised framework for floor or wall mounting in designated safe area.
- Pumped system which reduces flow failure associated with differential pressure designed systems.
- Standard system to be recalibrated every 6 months.
- No tapes needed.
- Standard instrumentation cabinet 800 x 600 x 300mm.
- Safety systems installed to meet HSE judgement on ATEX Directive for Zone 1 and Zone 2 gas stream applications.
- Standard systems can be easily modified for multi gas applications or to meet specific site requirements as necessary.
- Auto drain catch included as standard to eliminate the need for operator maintenance.

